

Cougar

WESTERN

MID-PROFILE FIFTH WHEELS

HALF-TON FIFTH WHEELS

HALF-TON TRAVEL TRAILERS

FORCE OF NATURE



FALL PREVIEW



Keystone RV
Company

The ultimate ownership experience.

The goal of Keystone RV Company is to surprise and delight our owners at each and every touchpoint. We're happy when our campers are happy, and we are committed to providing the very best ownership experience in the industry.



Keystone RV Company

1 EASIER SHOPPING.

At Keystone, we make choosing an RV as easy as finding the Big Dipper on a dark summer night. With comprehensive online product information, Key Connect™ product advisors, and an unparalleled dealer network, we will help you select the perfect RV for your family's adventure.

2 INNOVATIVE THINKING.

The road's a nicer place when you have the industry's smartest features behind you. Keystone leads the pack in patented innovations that make our RVs safer, more comfortable, and easier to operate.

3 LONG HAUL QUALITY.

To keep you on the road, there are certain things we just won't build a Keystone RV without. Game-changing features like our Unified Wiring Standard, Tru-Fit™ five-point slide construction, and no-fail Tuf-Lok™ A/C duct joiners combined with exhaustive testing and inspections are some of the reasons why Keystone is able to offer our owners the industry's best 3-year limited structural warranty.

4 WORRY-FREE CUSTOMER SERVICE.

Wherever the road takes you, you're never too far from an authorized Keystone service center. We also offer live service assistance, ultra-fast parts shipping, online maintenance tips and tricks, and a single-point warranty claims policy. *That's* peace of mind.

5 KEYSTONE NATION.

When you choose Keystone, you become one of the largest camping families in the country. We're Keystone Nation. A friendly community where people share photos, travel tips and amazing stories – all in the spirit of camaraderie and adventure. Come join us.

Experience the Cougar lifestyle by visiting [#keystonecougar](#)





ONE OF THE MOST-AWARDED BRANDS IN THE INDUSTRY

COUGAR



MID-PROFILE FIFTH WHEELS | HALF-TON FIFTH WHEELS | HALF-TON TRAVEL TRAILERS

Engineering and design that start with the customer.

Committed to innovation, quality, style and affordability, Keystone's Cougar brand sells more mid-profile fifth wheels and luxury travel trailers than any other brand. The Cougar line-up is designed to grow with your family, from your first RV to your last. Cougar takes the time to understand how you travel in each life stage, so that we can provide families with the best camping experiences, year after year, Cougar after Cougar. You can count on every Cougar to deliver user-friendly floorplans, unparalleled towability, innovative features and luxurious touches that make it America's most-awarded RV brand.

For more information, please visit keystonerv.com/cougar



more product detail at
www.keystonerv.com/Cougar

Cougar | MID-PROFILE FIFTH WHEELS

- EXCLUSIVE 90° plus MaxTurn Technology™ frame and hitch design for unparalleled maneuverability
- EXCLUSIVE HitchVision™ for faster and easier hook-up
- Climate Guard Protection Package: larger heating and cooling units, with in-floor heat ducting, 12V heat pads, racetrack A/C ducting, and increased insulation. Zero-degree rated
- NEW iN-Command® Generation 3 w/ Global Connect control system gives owners total control over power, slide rooms, awnings, HVAC and more, from a convenient master control panel as well as an enabled smartphone application
- Exceptionally durable and waterproof patent-pending automotive windshield design (select models)
- Ultra-stable and secure MORryde® Step Above™ steps
- Best-in-class unobstruction exterior pass-through storage and oversized baggage doors
- EXCLUSIVE Road Armor™ suspension equalizes axle load to dampen shock and vibration
- Best-in-class holding tank capacities
- Self-adjusting brakes, reverse tail lights and backup camera prep
- DynaSpan® seamless floor decking with 25-year warranty
- 2" accessory hitch receiver
- NEW modern interior styling with pillow-top seating, fold-flat sofa, and dimmable LED lighting in main slide
- KeyTV™ – A simplified multisource signal controller that distributes satellite, cable, and over-the-air feeds via a single coax cable to every television
- Oversized panoramic windows
- Gas/electric, oversized four-door refrigerator
- Standard bedroom slide-out with optional king bed
- 30" x 50" residential-sized shower with seat (N/A 367FLS)
- Washer/dryer prep standard (all models)
- Furrion® range and 22" oven with glass cooktop cover and Piezo ignition



iN-Command® Gen. 3 w/Global Connect
 Total control over HVAC, awnings, lights and monitoring system from your smartphone



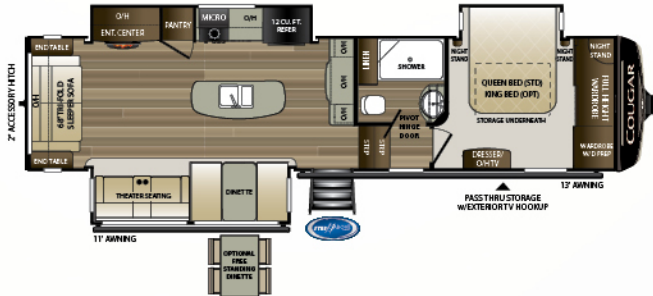
EXCLUSIVE MaxTurn Technology™
 Durable, patented design maximizes hitch turning radius without specialty hitches



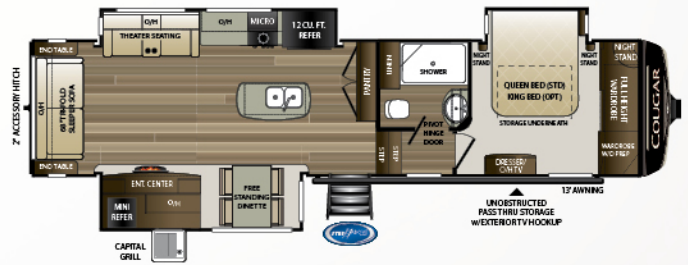
EXCLUSIVE KeyTV™
 Game-changing single-point control of over-the-air, cable and satellite feeds



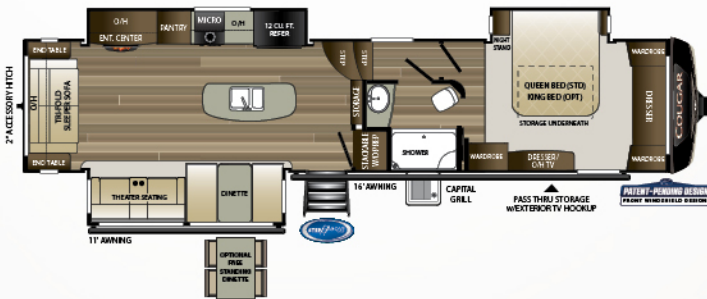
Zero-degree tested and rated
 Camp to 0°F without water lines or tanks freezing



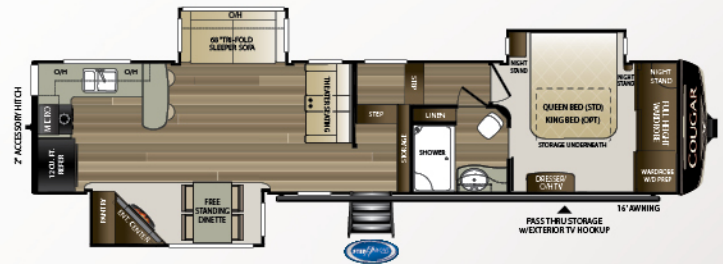
315RLS | Rear living room, three slides
Weight: 10475 LBS. | Length: 35' 8"



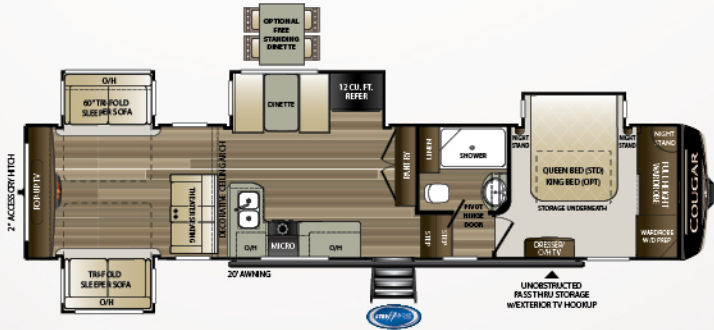
338RLK | Rear living room, outside kitchen
Weight: TBD | Length: TBD



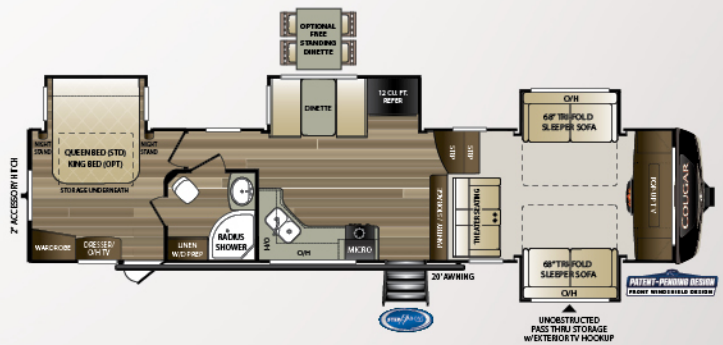
361RLW | Master suite, rear-living w/ windshield
Weight: 11200 LBS. | Length: 39' 4"



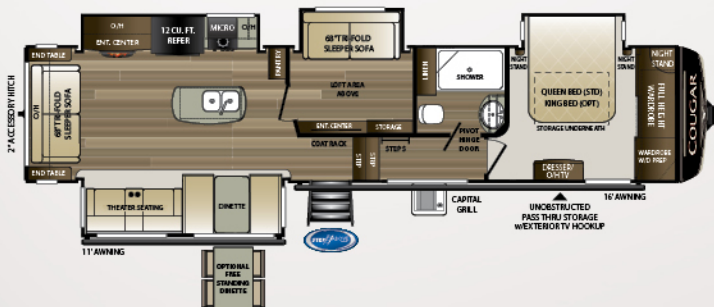
362RKS | Rear kitchen, three slides
Weight: 10665 LBS. | Length: 39' 4"



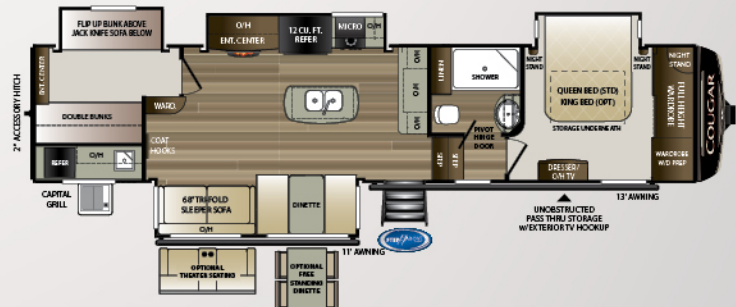
366RDS | Rear den, four slides
Weight: 11202 LBS. | Length: 39' 4"



367FLS | Front living room w/ windshield
Weight: 10963 LBS. | Length: 39' 4"



368MBI | Bonus room w/ loft
Weight: 11575 LBS. | Length: 39' 4"



369BHS | Bunk house, large outside kitchen
Weight: 11441 LBS. | Length: 39' 4"



more product detail at
www.keystonerv.com/Cougar-Half-Ton

Cougar | HALF-TON FIFTH WHEELS

- EXCLUSIVE 90° plus MaxTurn Technology™ frame and hitch design for unparalleled maneuverability
- EXCLUSIVE HitchVision™ for faster and easier hook-up
- NEW iN-Command™ Generation 3 with Global Connect gives owners total control over power, slides, awnings, HVAC and more
- Climate Guard Protection Package – larger heating and cooling units, in-floor heat ducting, racetrack A/C ducting, and increased insulation. Zero-degree rated
- Ultra-stable and secure MORryde® Step Above™ steps
- Best-in-class exterior pass-through storage and oversized baggage doors
- EXCLUSIVE Road Armor™ suspension equalizes axle load to damping shock and vibration
- Upgraded exterior Capital Grill BBQ (outside kitchen models)
- Interior and exterior LED lights
- 35,000 BTU furnace and 15,000 BTU air conditioner
- 50" living room television on most models
- Self-adjusting brakes, reverse tail lights and backup camera prep
- Power stabilizer jacks or optional automatic-leveling system
- 2" accessory hitch receiver
- Walkable roof with rear-wall ladder for easy maintenance
- KeyTV™ A simplified multisource signal controller that distributes satellite, cable, and over-the-air feeds via a single coax cable to every television
- NEW modern interior styling with pillow-top seating, fold-flat sofa, and dimmable lighting
- Furrion® range and 22" oven with glass cooktop cover
- 30" x 50" residential-style shower
- Best-in-class holding tank capacities



iN-Command® Gen. 3 w/Global Connect
 Total control over HVAC, awnings, lights and monitoring system from your smartphone



EXCLUSIVE MaxTurn Technology™
 Durable, patented design maximizes hitch turning radius without specialty hitches

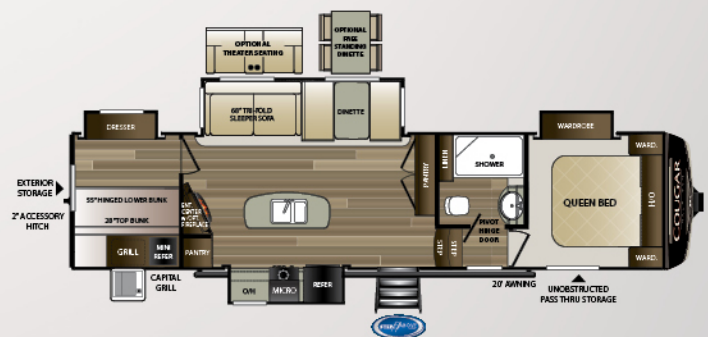
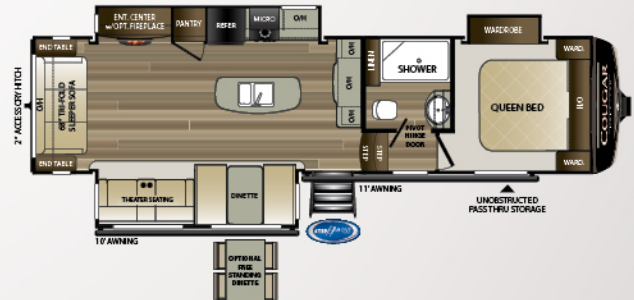
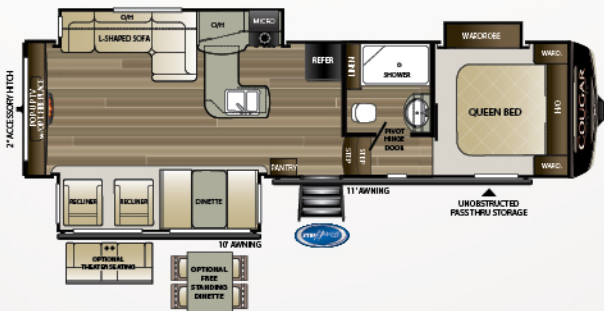
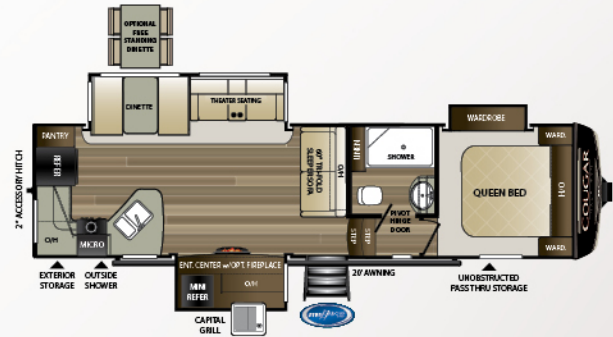
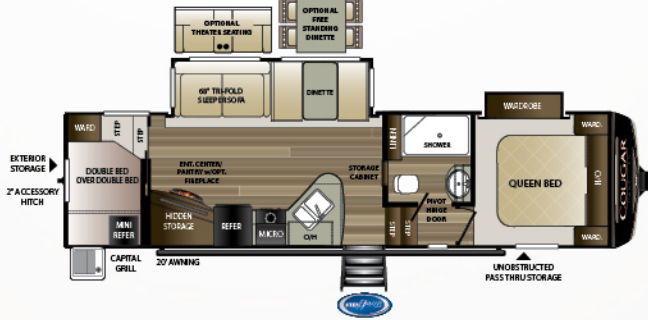
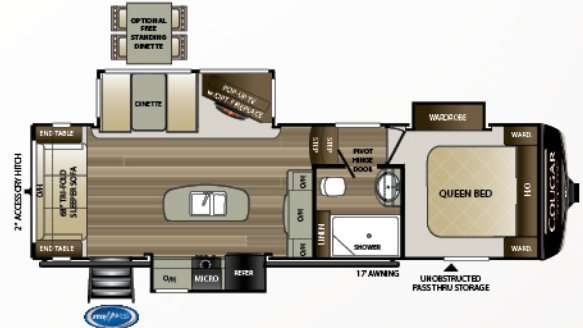
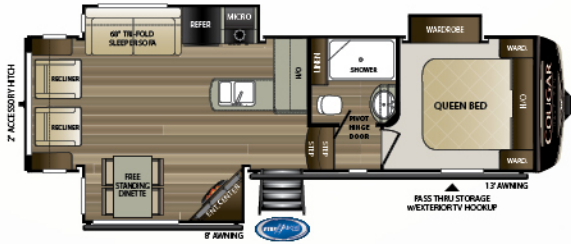
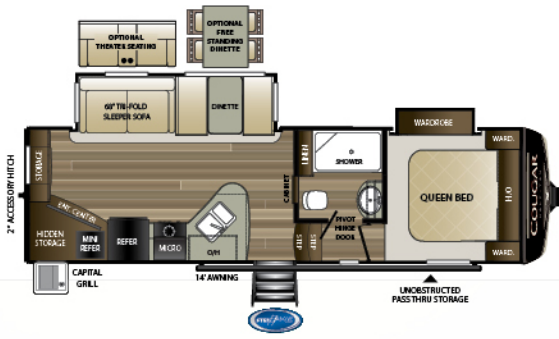


EXCLUSIVE KeyTV™
 Game-changing single-point control of over-the-air, cable and satellite feeds



Zero-degree tested and rated
 Camp to 0°F without water lines or tanks freezing

Cougar | HALF-TON FIFTH WHEEL FLOORPLANS

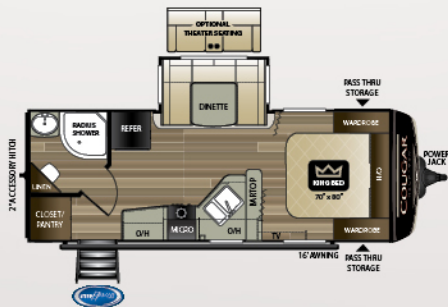




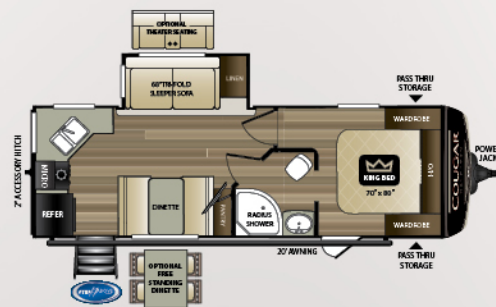
more product detail at
www.keystonerv.com/Cougar-Half-Ton

Cougar | HALF-TON TRAVEL TRAILERS

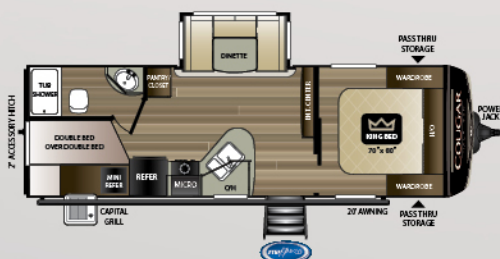
- NEW iN-Command™ Generation 3 with Global Connect gives owners total control over power, slides, awnings, HVAC and more
- Climate Guard protection package – larger heating and cooling units, residential in-floor heat ducting, racetrack A/C ducting, and increased insulation. Zero-degree rated
- Ultra-stable and secure MORryde® Step Above™ steps
- Upgraded exterior Capital Grill BBQ (outside kitchen models)
- Interior and exterior LED lights
- 35,000 BTU furnace and 15,000 BTU air conditioner
- 50" living room television on most models
- 70" x 80" standard king bed
- Arched rafters with 84" ceiling height
- Self-adjusting brakes, reverse tail lights and backup camera prep
- Power stabilizer jacks or optional automatic-leveling system
- 2" accessory hitch receiver
- Walkable roof with rear-wall ladder for easy maintenance
- KeyTV™ – A simplified multisource signal controller that distributes satellite, cable, and over-the-air feeds via a single coax cable to every television
- NEW modern interior styling with pillow-top seating, fold-flat sofa, and dimmable lighting
- Furrion® range and 22" oven with glass cooktop cover
- 30" x 50" residential-style shower
- Foot-flush porcelain toilet
- Best-in-class holding tank capacities



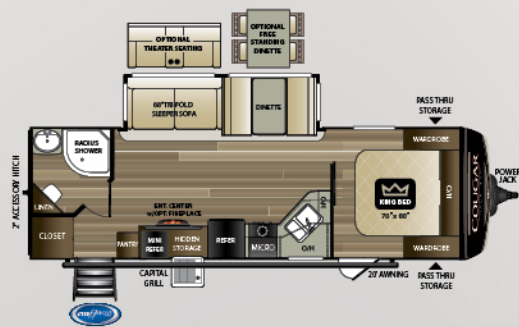
22RBSWE | Short Rear Bathroom with Slide
 Weight: 5460 LBS. | Length: 25' 11"



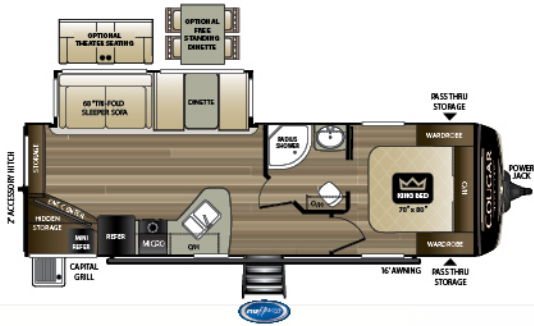
24SABWE | Dual Entry Rear Kitchen with Slide
 Weight: 5990 LBS. | Length: 28' 4"



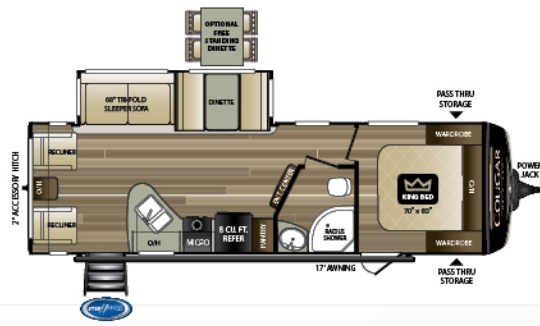
25BHSWE | Short Double Bunk House with Outside Kitchen
 Weight: 6010 LBS. | Length: 29' 4"



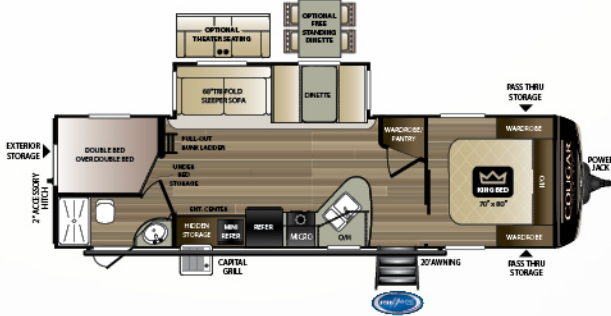
26RBSWE | Rear Bath with Slide and Outside Kitchen
 Weight: 6593 LBS. | Length: 30' 5"



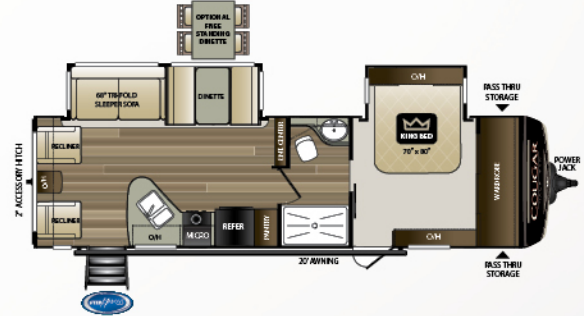
27RESWE | Rear Entertainment with Outside Kitchen
Weight: 6390 LBS. | Length: 30' 11"



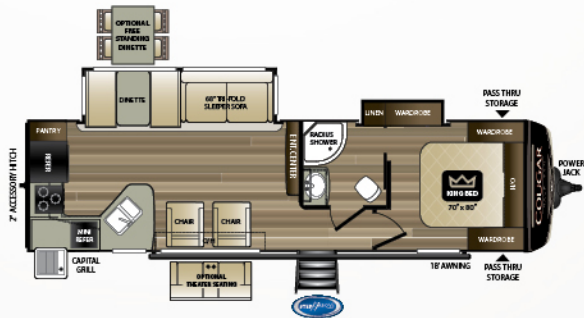
27SABWE | Real Living with Side Aisle Bath
Weight: 6679 | Length: 31' 6"



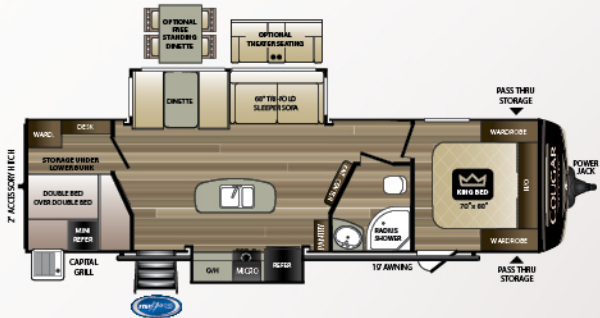
29BHSWE | Double Bunk House with Outside Kitchen
Weight: 6920 LBS. | Length: 34' 1"



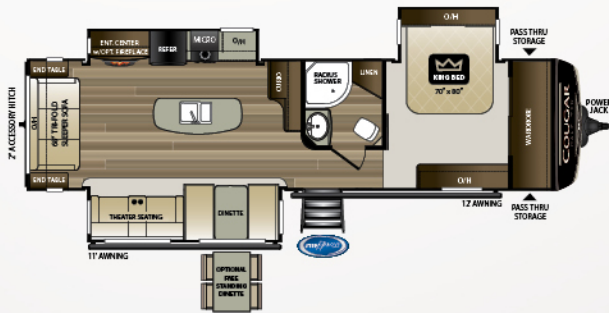
29RLDWE | Rear Living Room with Bed Slide
Weight: 7449 | Length: 33' 5"



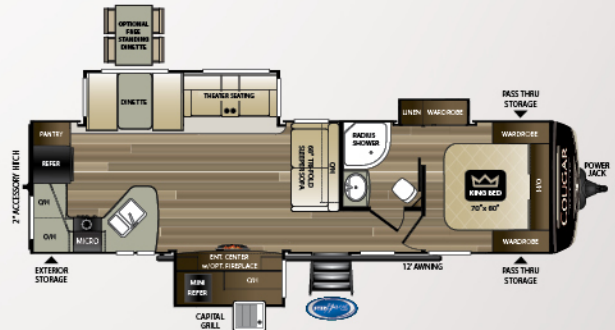
30RKSWE | Rear Kitchen with Outside Kitchen
Weight: 7141 LBS. | Length: 34' 3"



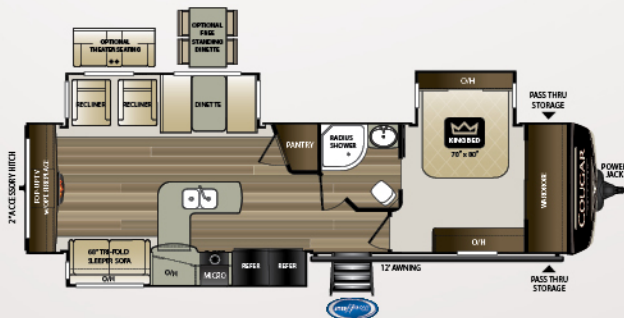
31BHKWE | Huge Rear Bunk room Double Slide
Weight: 7540 LBS. | Length: 34' 9"



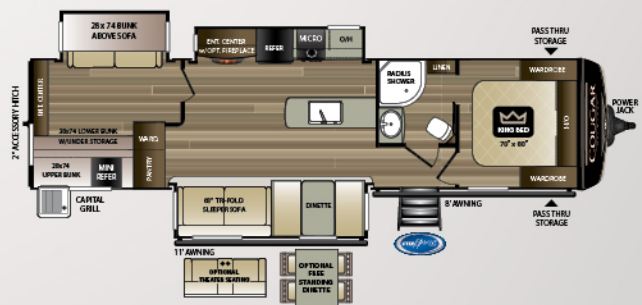
32RLI | Rear living room, three slides w/ bedroom slide
Weight: 8319 LBS. | Length: 35' 11"



33MLS | Rear kitchen, outside kitchen
Weight: 8088 LBS. | Length: 35' 3"



33SAB | Rear entertainment, double refrigerator
Weight: 8791 LBS. | Length: 36' 11"



34TSB | Three-slide bunk house w/ outside kitchen
Weight: 8548 LBS. | Length: 37' 5"

MID-PROFILE FIFTH WHEELS

MODEL	WEIGHT	CARRYING CAPACITY	HITCH WEIGHT	FRESH WATER	WASTE WATER	GRAY WATER	LPG	LENGTH*	HEIGHT 1-A/C	HEIGHT 2-A/C
315RLS	10475	1915	1995	81	38	76	60	35' 8"	12' 6"	13' 5"
338RLK	10605	1885	2095	81	38	76	60	36' 5"	12' 6"	13' 5"
361RLW	11200	2800	2005	81	38	76	60	39' 4"	12' 3"	13' 5"
362RKS	10665	3195	1860	81	38	76	60	39' 4"	12' 3"	13' 5"
366RDS	11202	2788	1990	81	38	76	60	39' 4"	12' 6"	13' 5"
367FLS	10963	3037	2455	81	38	76	60	39' 4"	12' 5"	13' 5"
368MBI	11575	2405	1980	81	38	76	60	39' 4"	12' 7"	13' 5"
369BHS	11441	2559	2065	81	38	76	60	39' 4"	12' 3"	13' 5"

HALF-TON FIFTH WHEELS

MODEL	WEIGHT	CARRYING CAPACITY	HITCH WEIGHT	FRESH WATER	WASTE WATER	GRAY WATER	LPG	LENGTH*	HEIGHT 1-A/C	HEIGHT 2-A/C
25RESWE	7680	2320	1630	60	38	76	60	29' 7"	11' 8"	12' 9"
27SGS	8110	2190	1650	60	30	60	60	31' 4"	11' 7"	12' 8"
27RLSWE	8090	2010	1460	60	38	76	60	31' 4"	11' 8"	12' 9"
29RDBWE	8340	1960	1650	60	38	76	60	33' 7"	11' 8"	12' 9"
29RKS	8700	1700	1605	60	30	60	60	32' 10"	11' 7"	12' 8"
29RES	8700	1600	1555	60	30	60	60	32' 10"	11' 7"	12' 8"
30RLS	8890	2110	1545	60	30	60	60	33' 6"	11' 9"	12' 10"
32BHS	9140	2360	1570	60	60	30	60	35' 9"	11' 9"	12' 10"
32DBH	9300	2200	1950	60	30	60	60	35' 5"	11' 9"	12' 10"

HALF-TON TRAVEL TRAILERS

MODEL	WEIGHT	CARRYING CAPACITY	HITCH	FRESH WATER	WASTE WATER	GRAY WATER	LPG	LENGTH*	HEIGHT
22RBSWE	5460	1740	550	60	38	76	60	25' 11"	11' 1"
24SABWE	5990	1810	660	60	38	76	60	28' 4"	11' 1"
25BHSWE	6010	1990	550	60	38	76	60	29' 4"	11' 1"
26RBSWE	6593	2207	850	60	38	76	60	30' 5"	11' 5"
27RESWE	6390	2410	710	60	38	76	60	30' 11"	11' 1"
27SABWE	6679	2121	900	60	38	76	60	31' 10"	11' 5"
29BHSWE	6920	1880	790	60	38	76	60	34' 1"	11' 1"
29RLDWE	7510	1990	1085	60	30	60	60	33' 5"	11' 4"
30RKSWE	7141	2359	800	60	38	76	60	34' 8"	11' 5"
31BHKWE	7540	1960	800	60	38	76	60	35' 2"	11' 5"
32RLI	8319	2181	1165	60	30	60	60	35' 11"	11' 4"
33MLS	8088	2412	1110	60	30	60	60	35' 3"	11' 4"
33SAB	8791	1709	1205	60	30	60	60	36' 11"	11' 4"
34TSB	8548	1952	1150	60	30	60	60	37' 5"	11' 4"

DISCLAIMER: Product information is as accurate as possible as of the date of publication of this brochure. All features, floor plans, and specifications in this brochure are subject to change without notice. Please also consult Keystone's web site at www.keystonev.com for more current product information and specifications. Tow Vehicle Disclaimer. CAUTION: Owners of Keystone recreational vehicles are solely responsible for the selection and proper use of tow vehicles. All customers should consult with a motor vehicle manufacturer or their dealer concerning the purchase and use of suitable tow vehicles for Keystone products. Keystone disclaims any liability or damages suffered as a result of the selection, operation, use or misuse of a tow vehicle. KEYSTONE'S LIMITED WARRANTY DOES NOT COVER DAMAGE TO THE RECREATIONAL VEHICLE OR THE TOW VEHICLE AS A RESULT OF THE SELECTION, OPERATION, USE OR MISUSE OF THE TOW VEHICLE. *Length is defined as the distance from the centerline of hitch pin/coupler to rear bumper of trailer.

STANDARDS AND OPTIONS

Mid-Profile Fifth Wheel

CAMPING IN STYLE PACKAGE
Champagne laminated side walls w/5-side aluminum superstructure
3/8" walkable roof decking
Fiberglass front cap with HitchVision™ & LED lights
Full-size spare tire
Cougar vintage maple glazed hardwood
Cabinet doors with residential hardware
12,000 BTU rapid-recovery 6-gallon gas/electric water heater
Aluminum wheels
Battery disconnect switch
LED interior and exterior lighting
MORryde® Solid Step on main entry - New
Friction hinge entry door
COUGAR ANNIVERSARY PACKAGE
12 cu. ft. refrigerator
1.6 cu. ft. microwave upgrade
Washer/dryer prep
21" Furrion® range w/piezo ignition and glass stovetop cover - New
L6® solid surface counter top upgrade
Gourmet stainless steel under-mount sink with upgraded chef's faucet w/sprayer
2" Accessory hitch with 300 lb. capacity - New
Upgraded Road Armor™ suspension kit
COUGAR COMFORT PACKAGE
15,000 BTU ducted air conditioner
50 AMP service, pre-wired and braced for 2nd A/C
Ducted Bedroom A/C option
35K BTU ducted furnace
Dual 30 lb. LP tanks
1000 CFM 4-Speed "Fantastic Fan" exhaust fan with rain sensor and wall-mounted controls
DELUXE ENTERTAINMENT/ TECHNOLOGY PACKAGE
50" LED HDTV in living area
32" LED HDTV in Bedroom
12V AM/FM/CD/DVD/MP3/Bluetooth player with HDMI ARC control
Worry-free, omni-directional digital TV antenna with booster
Exterior TV hookup with TV bracket
48" Real Feel 5500 BTU electric fireplace with thermostat control and remote
Furrion backup/observation camera prep
Furrion® portable solar panel prep
12V USB charging center
CLIMATE GUARD PROTECTION PACKAGE- NEW
Astro-Foil insulated slide floors
Astro-Foil insulated underbelly
Reflective foil-insulated front cap
Forced-air heated and enclosed underbelly
12V heat pads on holding tanks
Heated/enclosed dump valves
Heated/enclosed convenience center
SMART CAMPING
iN-Command® Pro Series with Global Connect- New
OPTIONS
70" X 80" king size bed (70" x 74" 367FLS)
13.5 BTU ducted bedroom A/C with thermostat
Free-standing dinette and chairs (mandatory on 338RLK)
Dual-pane frameless windows
Theater seats IPO tri-fold (369BHS only)
CSA construction

Half-Ton Fifth Wheel

CAMPING IN STYLE PACKAGE
Champagne laminated side walls w/5-side aluminum superstructure
3/8" walkable roof decking
Fiberglass front cap with HitchVision™ & LED lights
Full-size spare tire
Cougar vintage maple glazed hardwood
Cabinet doors with residential hardware
12,000 BTU rapid-recovery 6-gallon gas/electric water heater
Aluminum wheels
Battery disconnect switch
LED interior and exterior lighting
MORryde® Solid Step on main entry - New
Friction hinge entry door
HALF TON FW ANNIVERSARY PACKAGE
8 cu ft. refrigerator
0.9 cu. ft. microwave
21" Furrion® range w/piezo ignition and glass stovetop cover - New
Foil-wrap Seamless Galley and Lavatory Counter tops
Gourmet stainless steel under-mount sink with upgraded chef's faucet w/sprayer
2" Accessory hitch with 300 lb. capacity - New
Upgraded Road Armor™ suspension kit
HALF TON FW COMFORT PACKAGE
15,000 BTU ducted A/C
50 AMP service, pre-wired and braced for 2nd A/C
Ducted bedroom A/C
35K BTU ducted furnace
Dual 30 lb. LP tanks
CLIMATE GUARD PROTECTION PACKAGE- NEW
Astro-Foil insulated slide floors
Astrofoil insulated underbelly
Reflective foil insulated front cap
Forced-air heated and enclosed underbelly
12V heat pads on holding tanks
Heated/enclosed dump valves
Heated/ enclosed convenience center
SMART CAMPING
iN-Command® Pro Series with Global Connect- New
OPTIONS
Electric rear stabilizing jacks
Electric 4-Point leveling system (NA 22RBS)
Dual-pane frameless windows
13.5 BTU ducted bedroom A/C with thermostat
Free-standing dinette and chairs
Fireplaces (NA 25RESWE)
Theater seat IPO tri-fold (25RESWE, 29RDBWE, 32BHS, 32DBH Only)
Theater seat IPO recliners (29RES Only)
CSA construction

Half-Ton Travel Trailers

CAMPING IN STYLE PACKAGE
Champagne laminated side walls w/5-side aluminum superstructure
3/8" walkable roof decking
Fiberglass front cap with HitchVision™ & LED lights
Full-size spare tire
Cougar vintage maple glazed hardwood
Cabinet doors with residential hardware
12,000 BTU rapid-recovery 6-gallon gas/electric water heater
Aluminum wheels
Battery disconnect switch
LED interior and exterior lighting
MORryde® Solid Step on main entry - New
Friction hinge entry door
HALF TON TT ANNIVERSARY PACKAGE
8 cu ft. refrigerator
0.9 cu. ft. microwave
21" Furrion® range w/piezo ignition and glass stovetop cover - New
Foil-wrap Seamless Galley and Lavatory Counter tops
Gourmet stainless steel under-mount sink with upgraded chef's faucet w/sprayer
2" Accessory hitch with 300 lb. capacity- New
HALF TON TT COMFORT PACKAGE
15,000 BTU ducted A/C
35K BTU ducted furnace
Dual 30 lb. LP tanks
CLIMATE GUARD PROTECTION PACKAGE- NEW
Astro-Foil insulated slide floors
Astro-Foil insulated underbelly
Reflective foil insulated front cap
Forced-air heated and enclosed underbelly
12V heat pads on holding tanks
Heated/enclosed dump valves
Heated/ enclosed convenience center
SMART CAMPING
iN-Command® Pro Series with Global Connect- New
OPTIONS
Electric Rear Stabilizing Jacks (Mandatory 22RBS)
Automatic Leveling System (N/A 22RBS)
Dual Pane Frameless Windows
50 Amp Service/Wire and Brace for 2nd AC (N/A All WE Models)
(Mandatory: 32RLI, 33SAB, 33MLS, 34TSB)
Fireplace (32RLI, 33SAB, 33MLS, 34TSB)
Free Standing Dinette and Chairs
Theater Seat IPO Tri-Fold (24SABWE, 26RBSWE, 27RESWE, 29BHSWE, 34TSB, Only)
Theater Seat IPO Recliners (33SAB, 30RKSWE)
Theater Seats IPO Dinette (22RBSWE Only)
CSA Construction

BUILT FOR THE LONG HAUL



PRINT 8.2018

